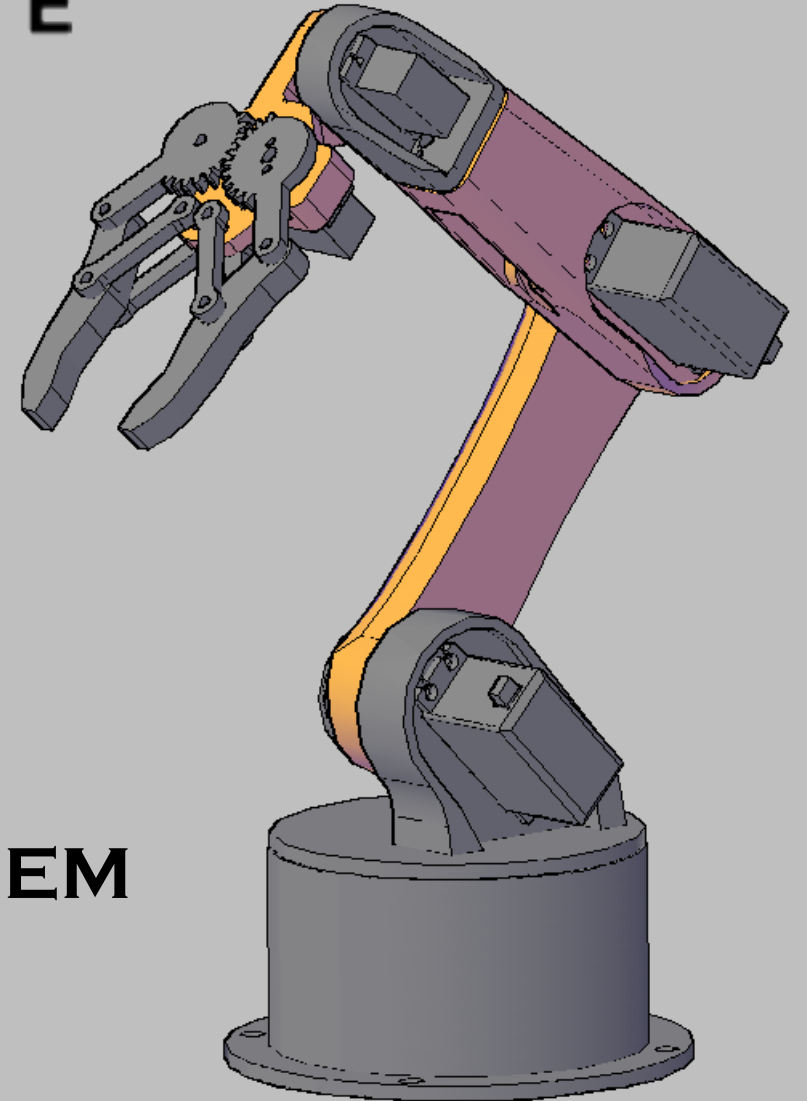
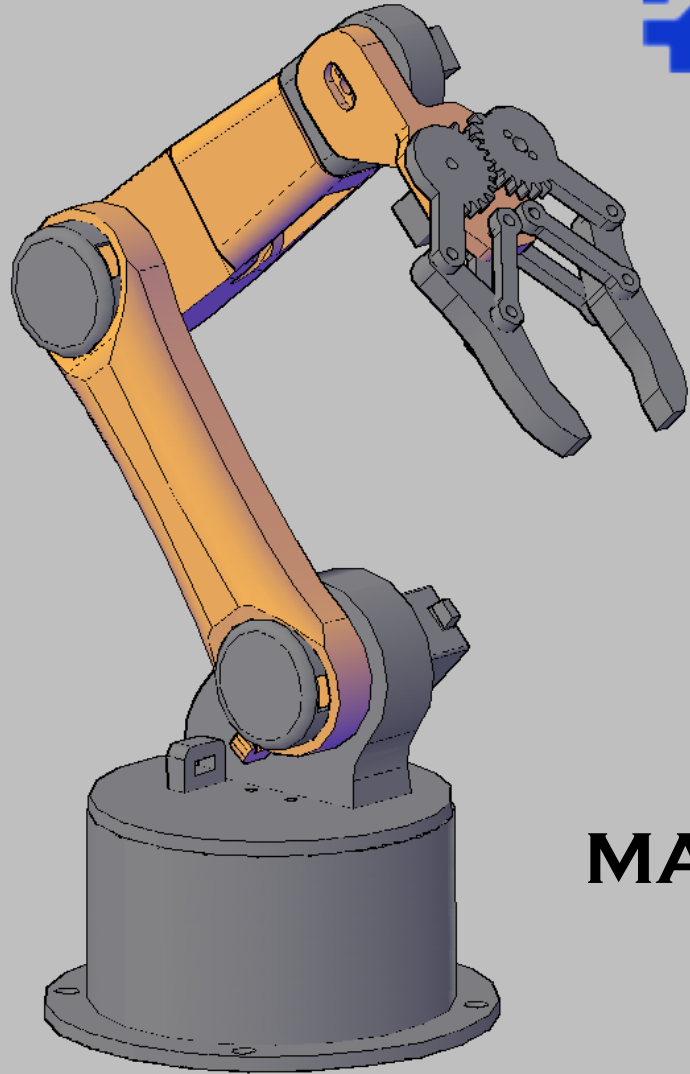




ELETROGATE



BRB-AS5

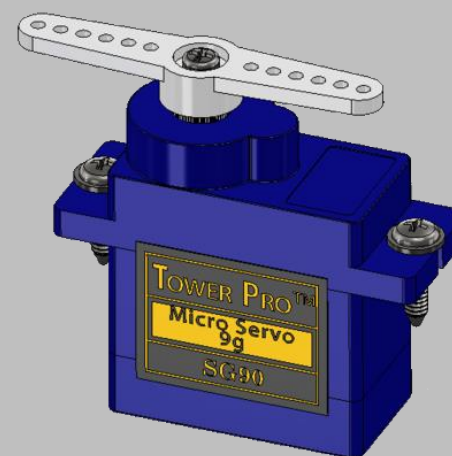
MANUAL DE MONTAGEM

Servos Recomendados para a montagem e funcionamento do BRB – AS5:

3 Servos MG995R ou MG996R

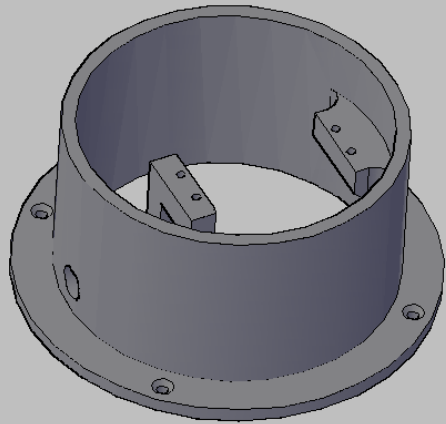


3 Servos SG90 ou MG90

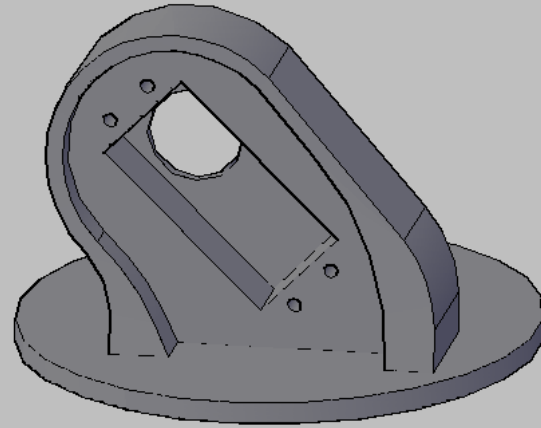


Dica: Geralmente os Servos já vem alinhados a 90°. Se atente a posição das peças na montagem

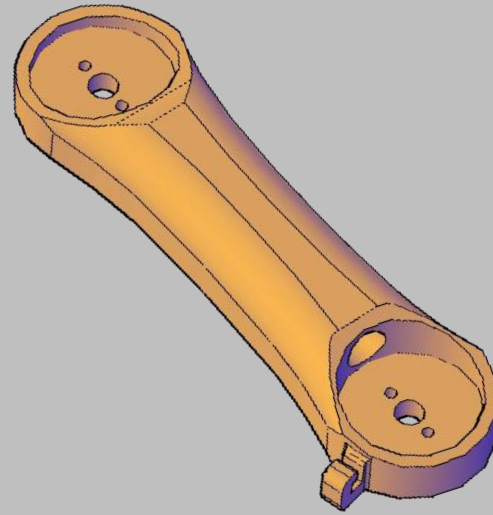
PEÇAS INCLUSAS PARA MONTAGEM



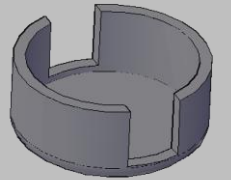
1



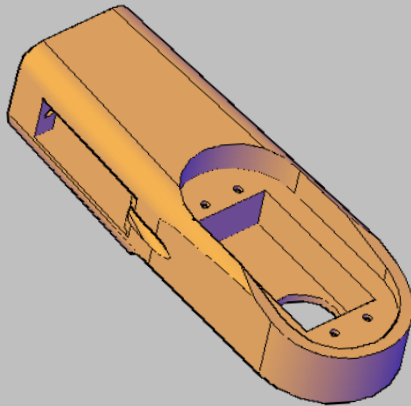
2



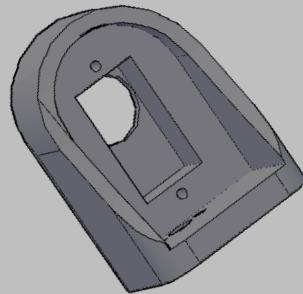
3



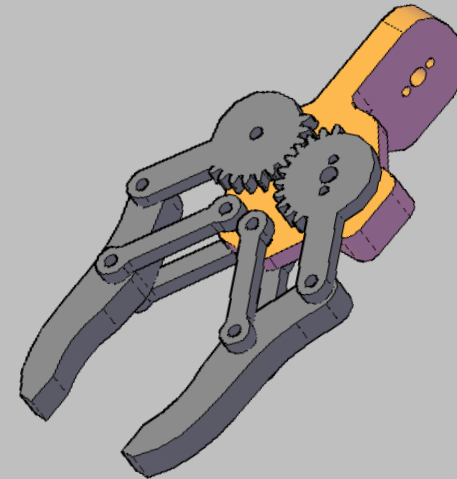
4



5

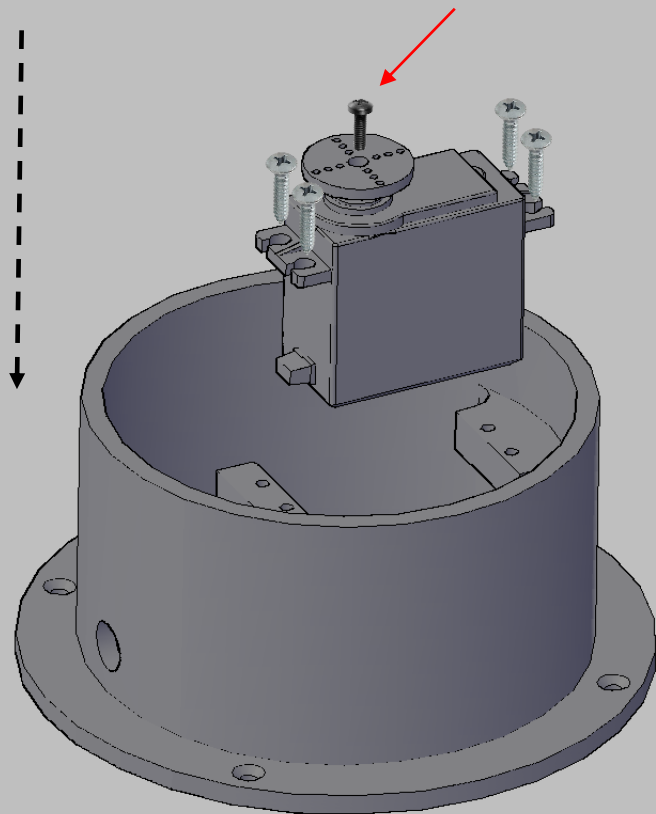


6



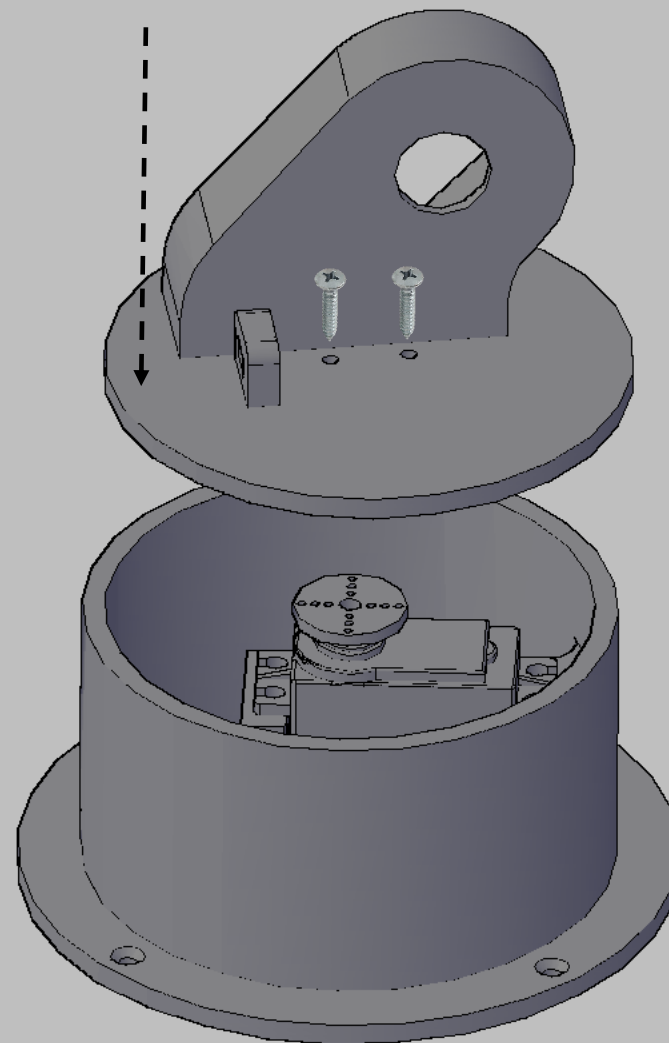
7

PASSO 1



1. Prenda o Servo MG996R com os 4 parafusos na peça 1 e coloque o parafuso preto que fixa a engrenagem do servo

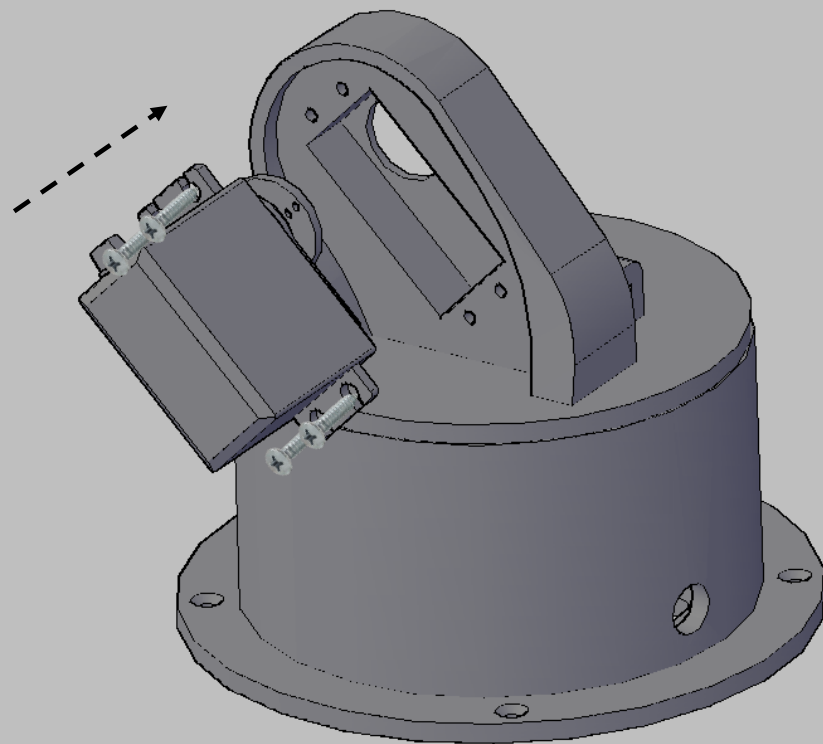
PASSO 2



2. Após alinhar o servo coloque a peça 2 no servo da peça 1 e coloque os parafusos do Servo MG996R na engrenagem do servo

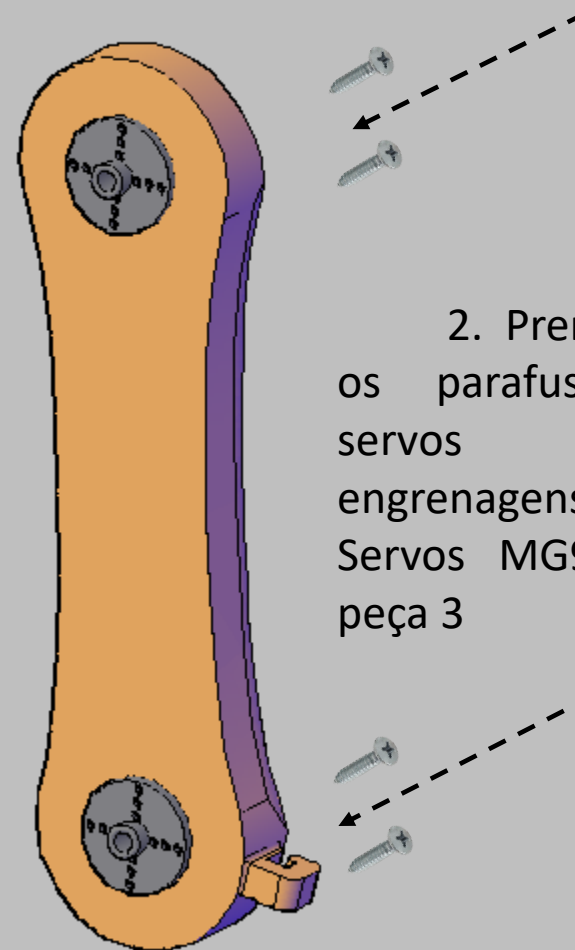


PASSO 3



1. Coloque o Servo MG996R na peça 2

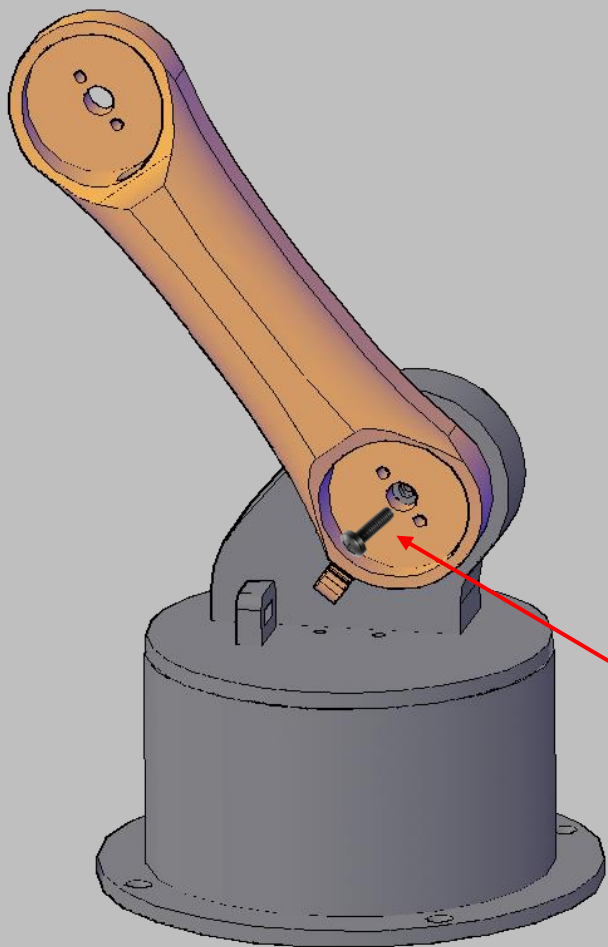
PASSO 4



2. Prenda com os parafusos dos servos as engrenagens dos Servos MG996R na peça 3

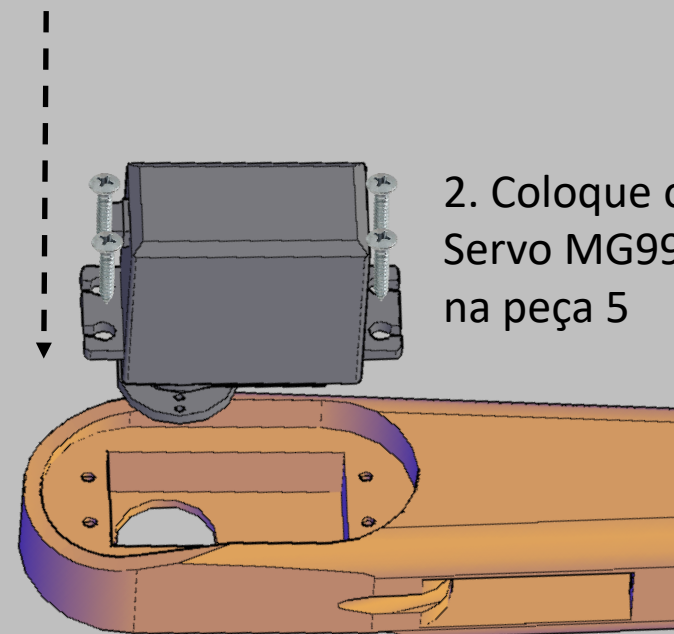


PASSO 5



1. Após alinhar o Servo da peça 2 com a peça 3 coloque o parafuso preto do Servo MG996R

PASSO 6

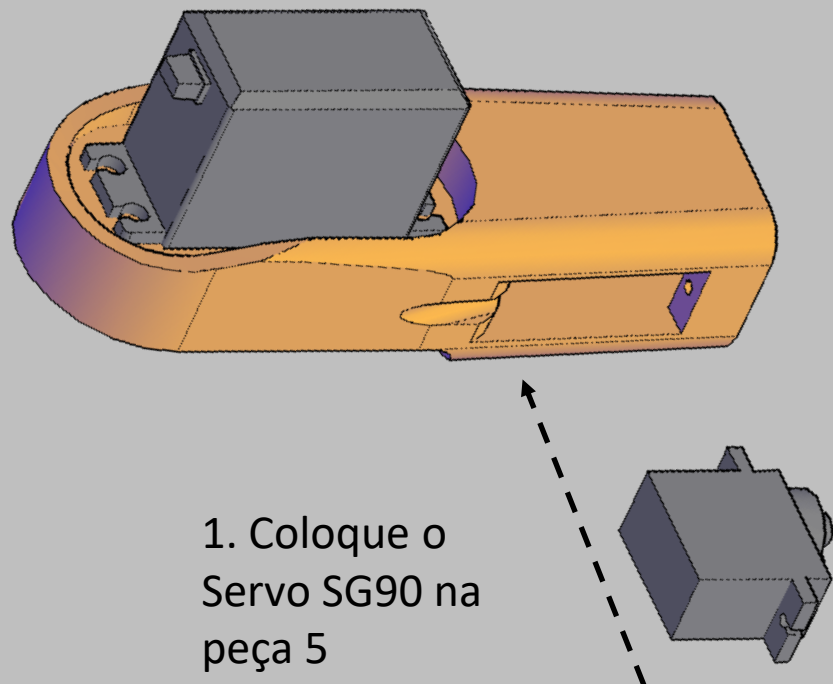


2. Coloque o Servo MG996R na peça 5

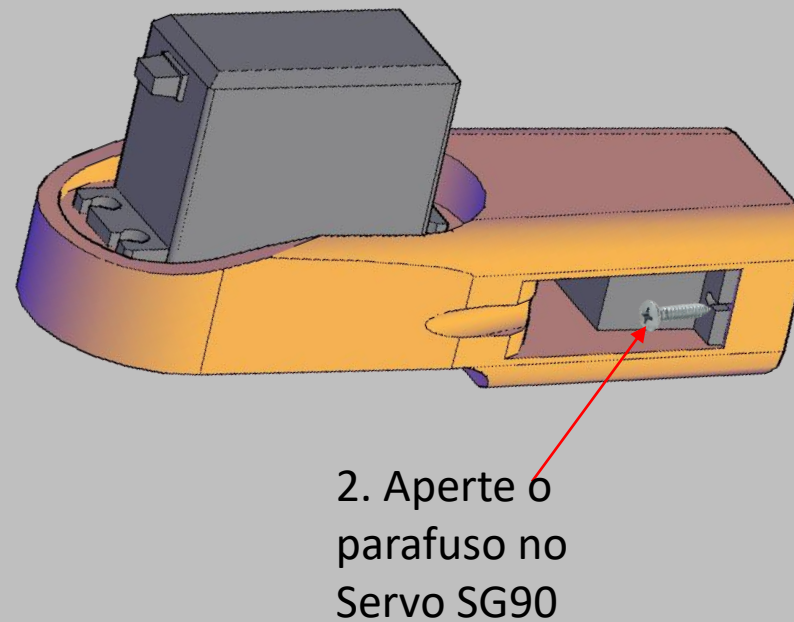


ELETROGATE

PASSO 7

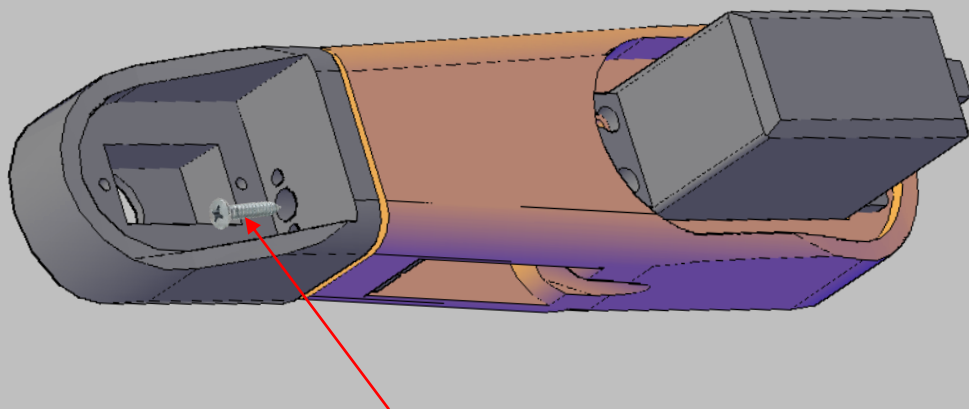


PASSO 8



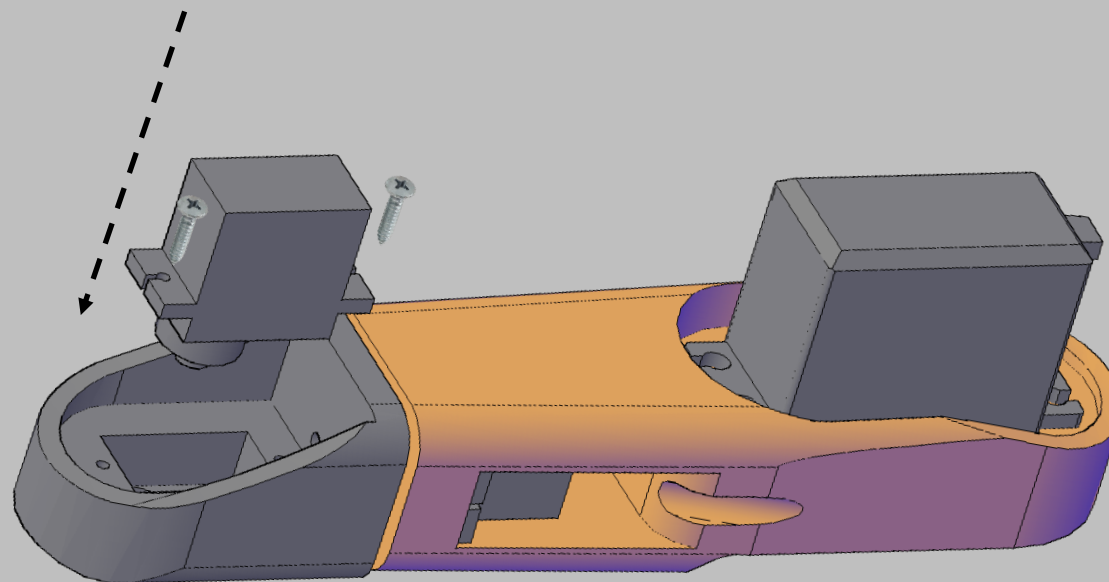


PASSO 9

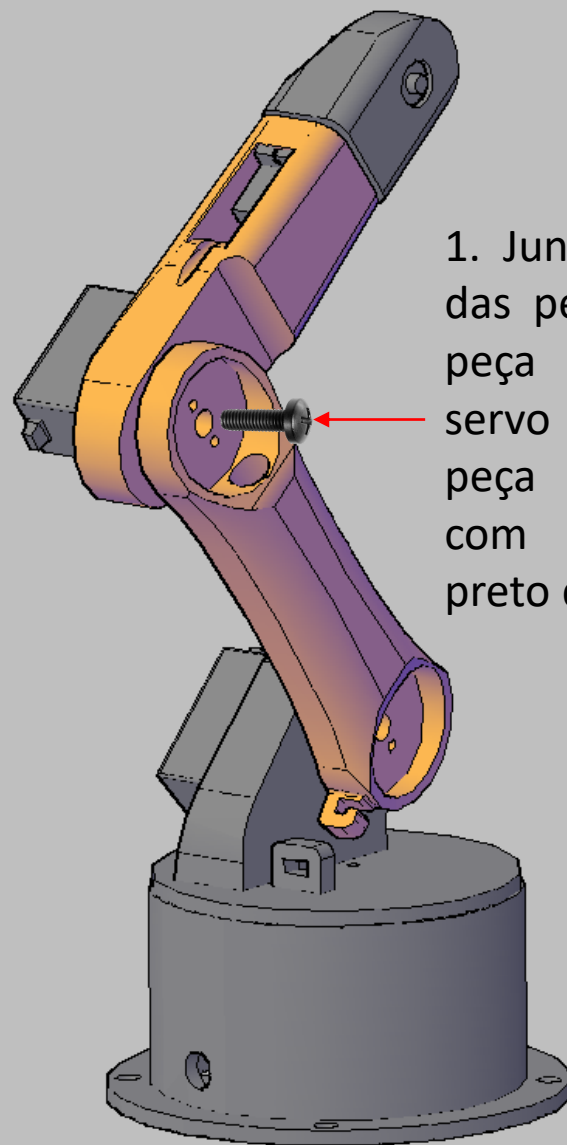


1. Após alinhar o Servo SG90 da peça 5 com a peça 6 coloque o parafuso que aperta a engrenagem do servo

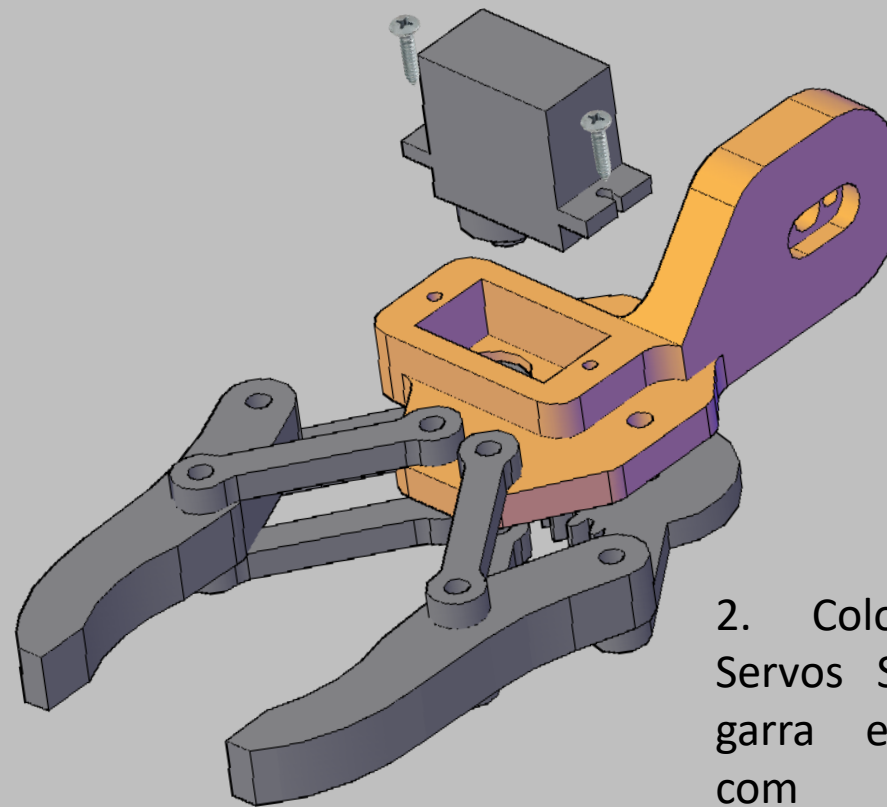
PASSO 10



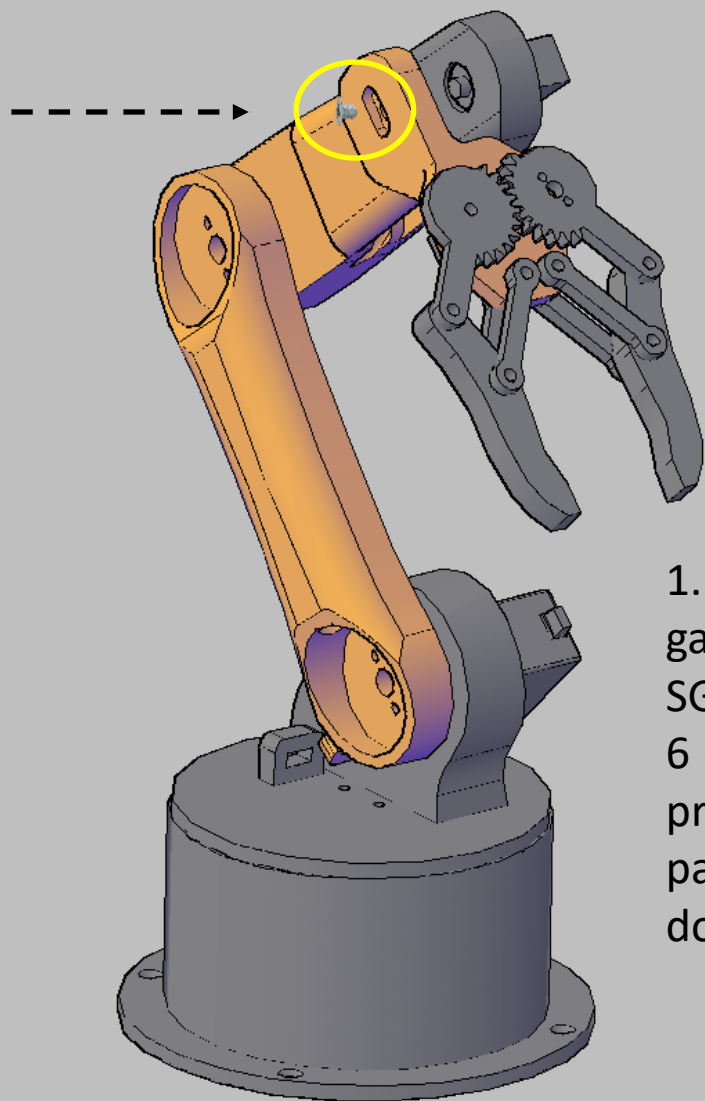
2. Coloque o Servo SG90 na peça 6



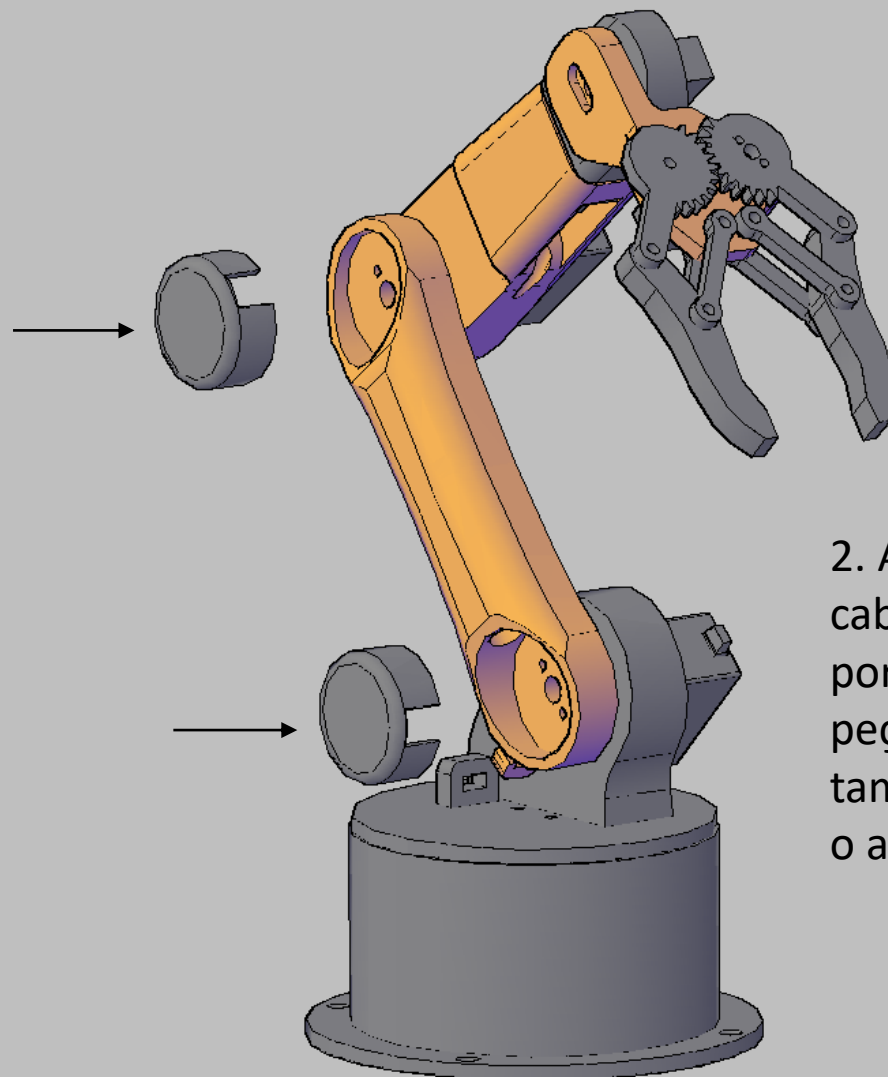
1. Junte o conjunto das peças 5 e 6 na peça 3. Alinhe o servo MG996R da peça 5 e prenda com o parafuso preto do Servo.



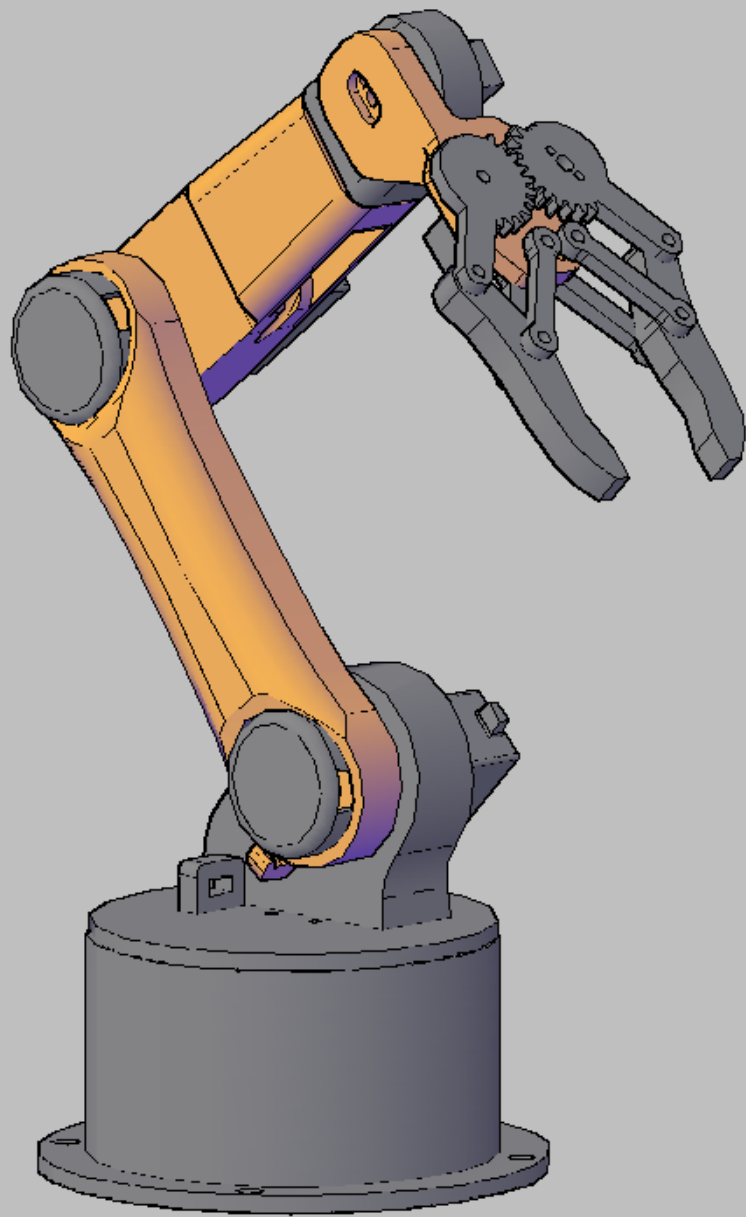
2. Coloque o Servos SG90 na garra e alinhe com as engrenagens da



1. Coloque a garra no Servo SG90 da peças 6 e após alinhar prenda com o parafuso menor do servo SG90



2. Após passar os cabos dos servos por dentro da peça 3 coloque as tampas para dar o acabamento



Parabéns!

O seu BRB –AS5 está
montado



ELETROGATE